

# Rampion 2 Wind Farm

## Category 6: Environmental Statement

### Volume 3, Chapter 26: Water environment – Figures (Part 2 of 2)

**Date: August 2023**

**Revision A**

Document Reference: 6.3.26

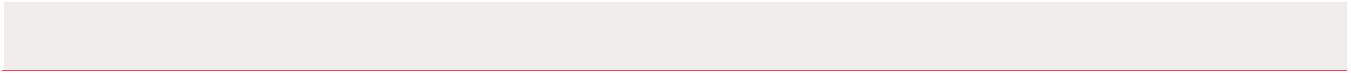
Pursuant to: APFP Regulations 5 (2) (a), 5 (2) (l)

Ecodoc number: 004884772-01



## Document revisions

Revision	Date	Status/reason for issue	Author	Checked by	Approved by
A	04/08/2023	Final for DCO Application	WSP	RED	RED

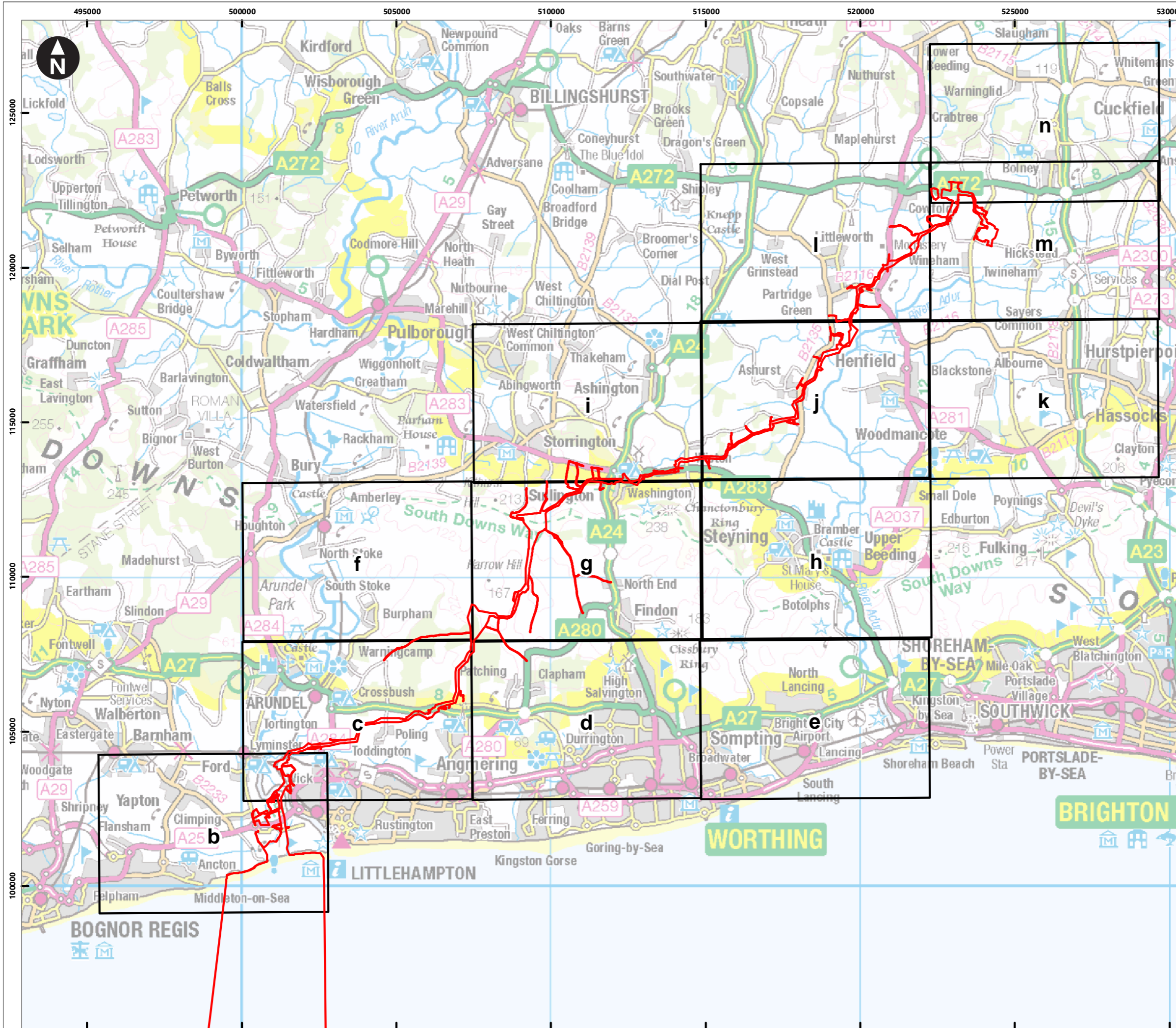


# Contents



## List of Figures

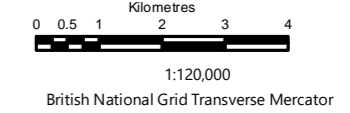
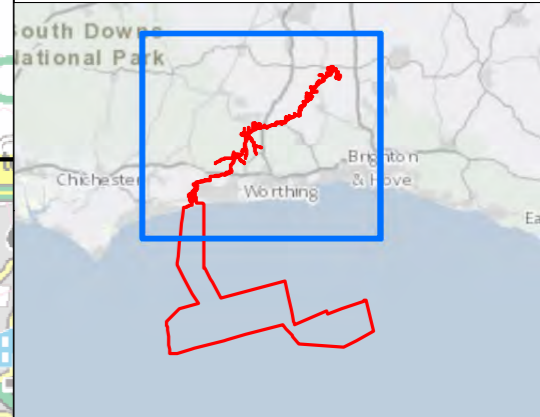
Figure number	Figure Title	APFP number	Ecodoc number	Revision	Revision Date	Document Part
Figure 26.1	Water environment Study Area and overview of surface water WFD waterbodies and monitoring locations	5 (2) (l)	004866441-01	A	04/08/2023	Part 1 of 2
Figure 26.2a-t	Surface water catchments, including WFD water bodies and water dependent designated conservation sites	5 (2) (l)	004866442-01	A	04/08/2023	Part 1 of 2
Figure 26.3	Solid geology (1:625,000)	5 (2) (a)	004866443-01	A	04/08/2023	Part 1 of 2
Figure 26.4	Superficial geology (1:625,000)	5 (2) (a)	004866444-01	A	04/08/2023	Part 1 of 2
Figure 26.5	Water environment Study Area and groundwater WFD bodies	5 (2) (a)	004866445-01	A	04/08/2023	Part 1 of 2
Figure 26.6a-n	Water Resources including Licensed Abstractions, SPZs PWSs	5 (2) (a)	004866448-01	A	04/08/2023	Part 2 of 2

Figure number	Figure Title	APFP number	Ecodoc number	Revision	Revision Date	Document Part
	and Consented Discharges					
Figure 26.7	Environment Agency Flood Map for Planning overview	5 (2) (a)	004866450-01	A	04/08/2023	Part 2 of 2
Figure 26.8a-c	Environment Agency Risk of Flooding from Surface Water Flood Extent overview	5 (2) (a)	004866451-01	A	04/08/2023	Part 2 of 2
Figure 26.9	Water Environment Cumulative Effects Assessment (CEA) Zone of Influence	5 (2) (a)	004866452-01	A	04/08/2023	Part 2 of 2



Service Layer Credits: Contains OS data © Crown Copyright and database right 2020  
 © Crown copyright and database rights [2022] Ordnance Survey 0100031673

**Key**  
 Proposed DCO Order Limits  
 Spatial frame of reference for pages (26.6 b-n)



Rampion Extension Development  


Rampion 2 Offshore Wind Farm  
 Figure 26.6a Water Resources including Licensed Abstractions, SPZs PWSs and Consented Discharges

Environmental Statement

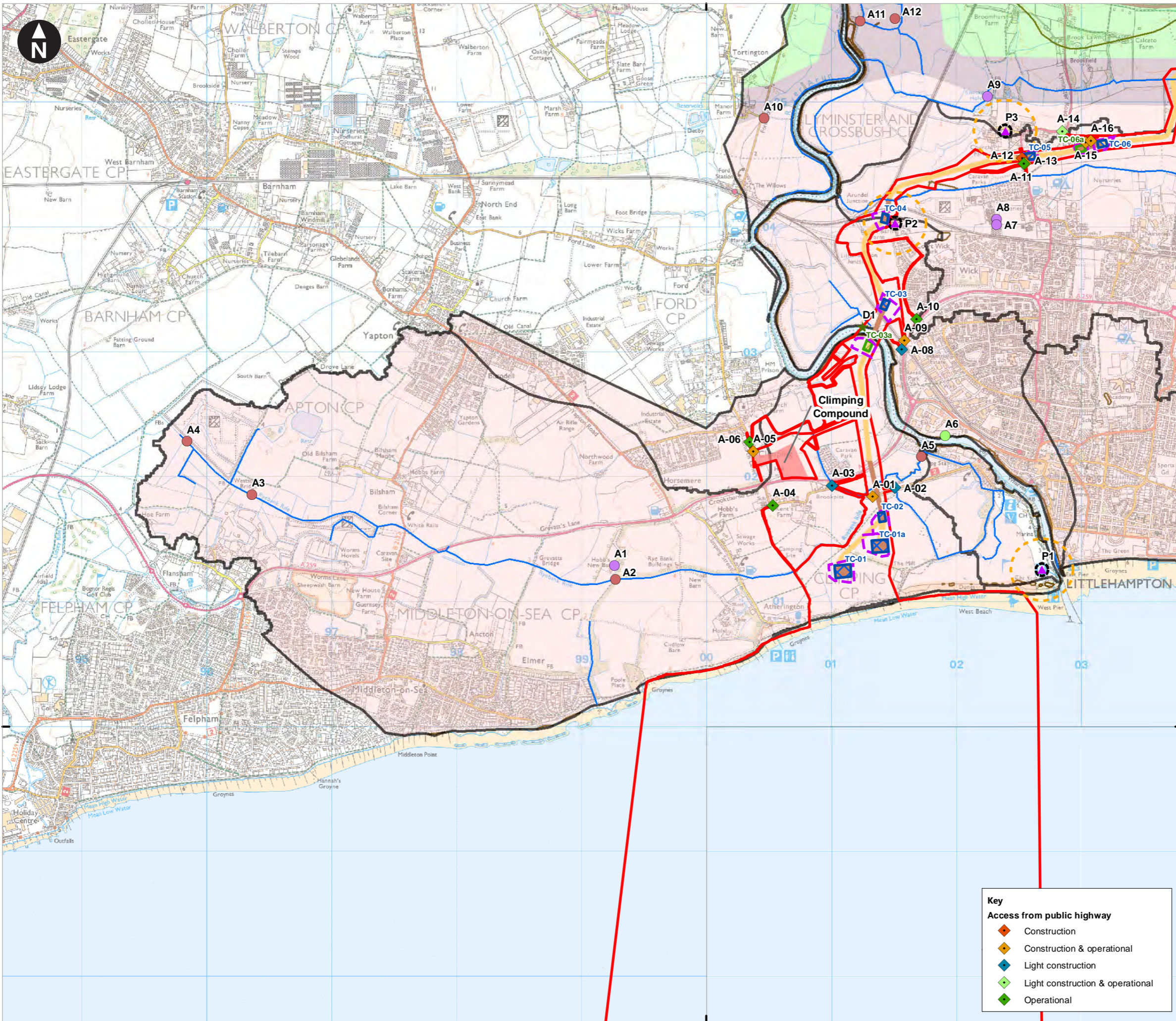
System Identifier: 42285-WSPE-ES-ON-FG-OY-7298 Version: 1.0

Company: WSP	Drawn By: SUTET	Chk/Prvd: DOUGG	Drawn Date: 26/07/2023	Status: FINAL
--------------	-----------------	-----------------	------------------------	---------------

500000

Service Layer Credits: Contains OS data © Crown Copyright and database right 2020

© Crown copyright and database rights 2023 Ordnance Survey 0100031673



**Key**

- Proposed DCO Order Limits
- Indicative trenchless section
- Indicative open cut section
- Temporary construction compound
- Trenchless Crossing (TC) compounds
- Trenchless Crossing (TC) compound alternatives
- Trenchless Crossing (TC) limits of deviation

**Licensed abstractions**

- Southern Region Groundwater
- Southern Region Surface Waters
- Southern Region Tidal Waters

**Private water supplies**

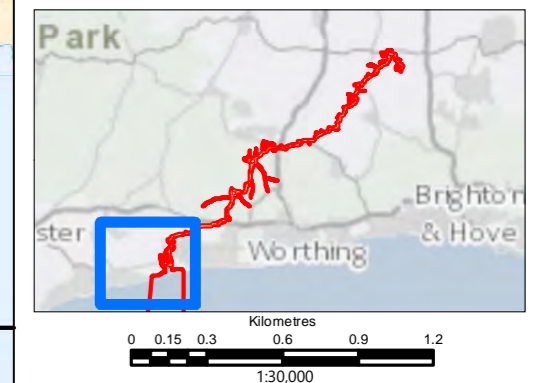
- ▲ Groundwater
- Private water supply buffer (50m)
- Private water supply buffer (250m)

**Consented discharges**

- ★ Consented discharges

**Bedrock Geology**

- Lambeth group
- Thames group
- White chalk subgroup
- Rivers
- Contours
- Catchments



**Key**

**Access from public highway**

- ◆ Construction
- ◆ Construction & operational
- ◆ Light construction
- ◆ Light construction & operational
- ◆ Operational

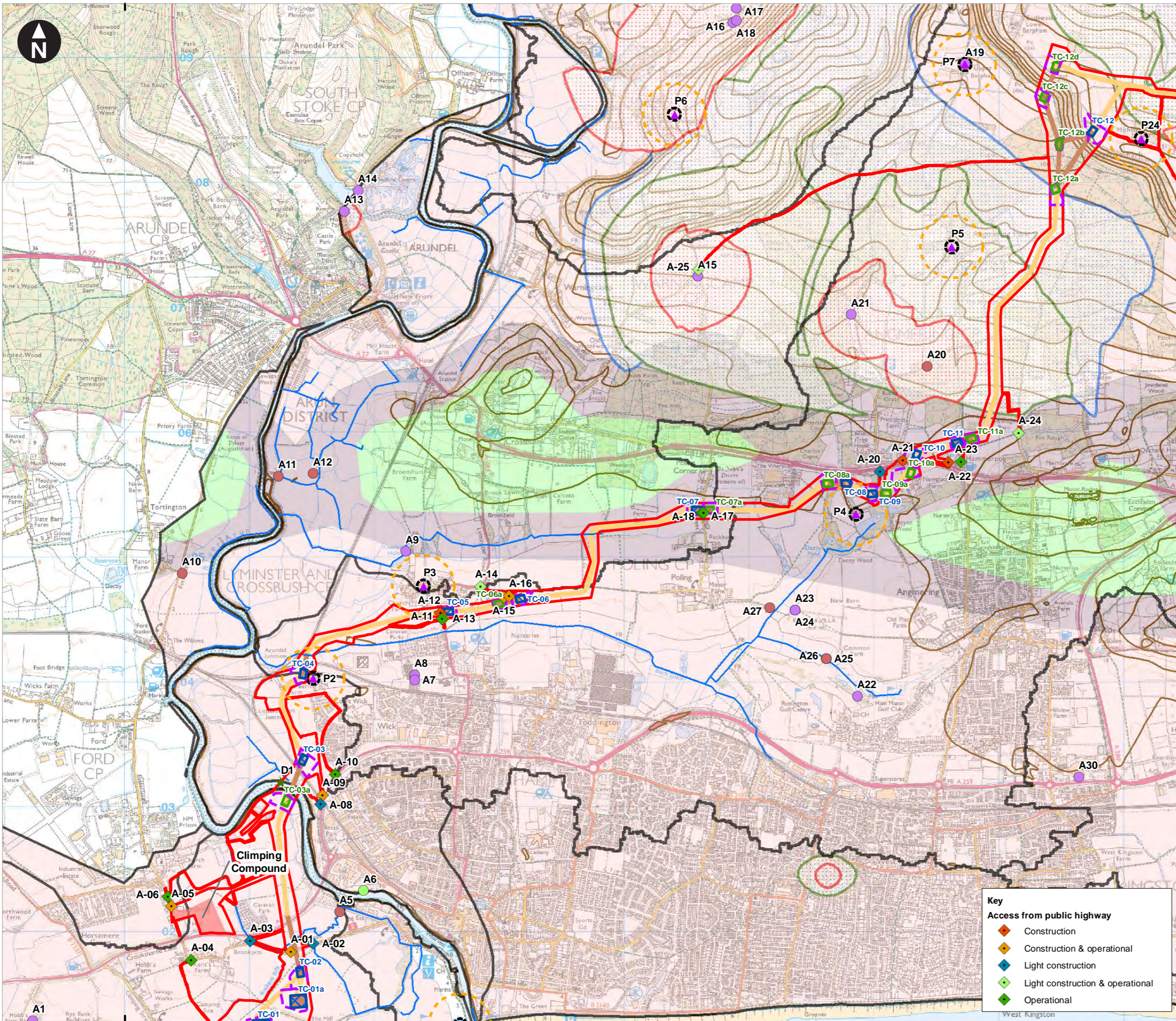
Rampion Extension Development

**Rampion 2 Offshore Wind Farm**

Figure 26.6b Water Resources including Licensed Abstractions, Source Protection Zones, Private Water Supplies and Consented Discharges.

Environmental Statement

System Identifier: 42285-WSPE-ES-ON-FG-OY-7298		Version: 1.0
Company: WSP	Drawn By: SUTET	Chk/Prvrd: DOUGG
Drawn Date: 27/07/2023	Status: FINAL	



**Key**

- Proposed DCO Order Limits
- Indicative trenchless section
- Indicative open cut section
- Temporary construction compound
- Trenchless Crossing (TC) compounds
- Trenchless Crossing (TC) compound alternatives
- Trenchless Crossing (TC) limits of deviation

**Licensed abstractions**

- Southern Region Groundwater
- Southern Region Surface Waters
- Southern Region Tidal Waters

**Private water supplies**

- Groundwater
- Private water supply buffer (50m)
- Private water supply buffer (250m)

**Consented discharges**

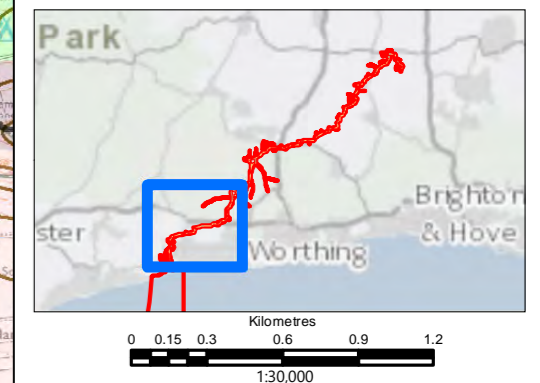
- Consented discharges

**Source Protection Zones**

- Zone I - Inner Protection Zone
- Zone II - Outer Protection Zone
- Zone III - Total Catchment

**Bedrock Geology**

- Lambeth group
- Thames group
- White chalk subgroup
- Rivers
- Contours
- Catchments



**Key**

**Access from public highway**

- Construction
- Construction & operational
- Light construction
- Light construction & operational
- Operational

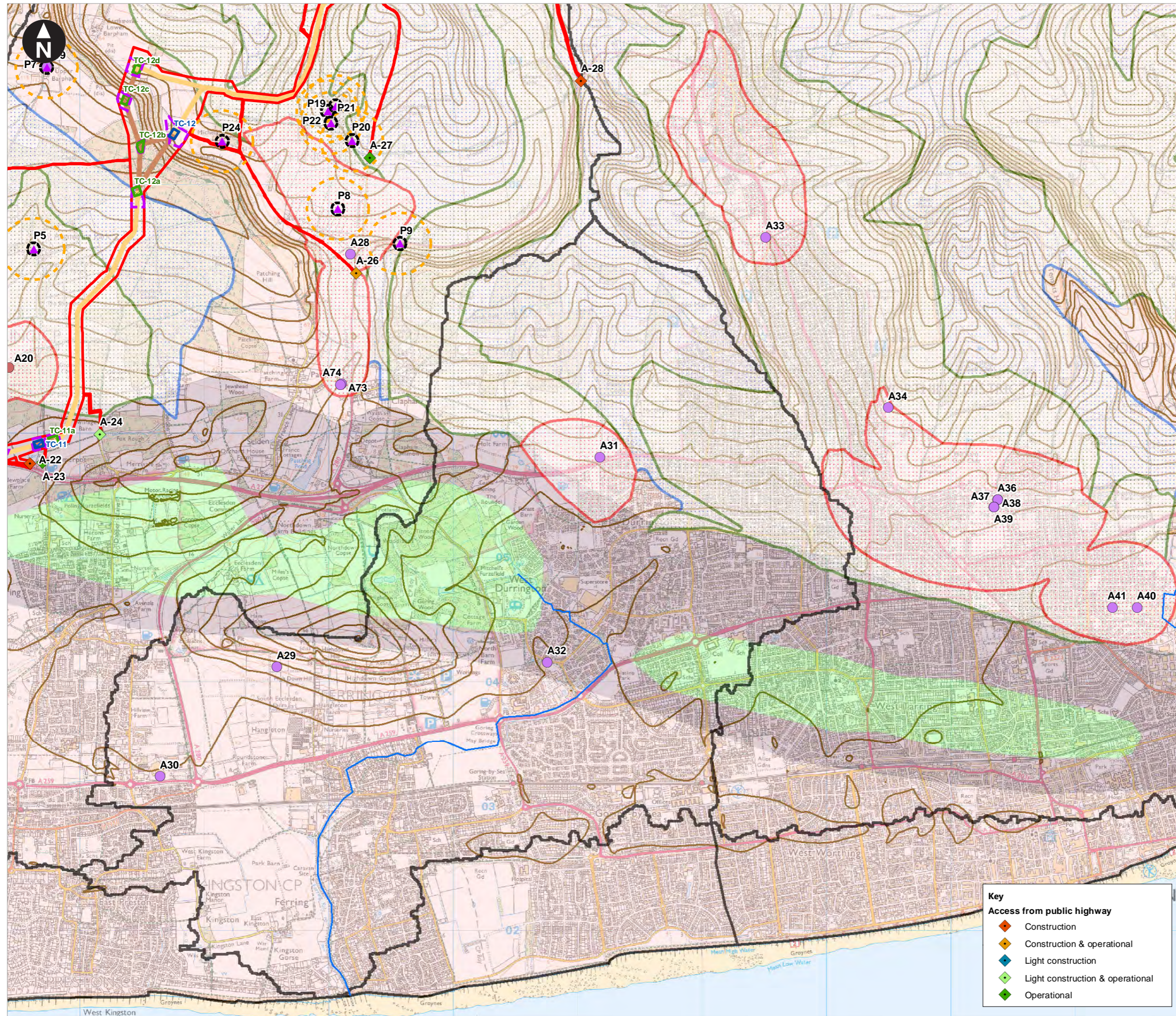
Rampion Extension Development

Rampion 2 Offshore Wind Farm

Figure 26.6c Water Resources including Licensed Abstractions, Source Protection Zones, Private Water Supplies and Consented Discharges.

Environmental Statement

System Identifier:	Version:			
42285-WSP-ES-ON-FG-OY-7298	1.0			
Company:	Drawn By:	Chk/Prvrd:	Drawn Date:	Status:
WSP	SUTET	DOUGG	27/07/2023	FINAL



**Key**

- Proposed DCO Order Limits
- Indicative trenchless section
- Indicative open cut section
- Trenchless Crossing (TC) compounds
- Trenchless Crossing (TC) compound alternatives
- Trenchless Crossing (TC) limits of deviation

**Licensed abstractions**

- Southern Region Groundwater
- Southern Region Surface Waters

**Private water supplies**

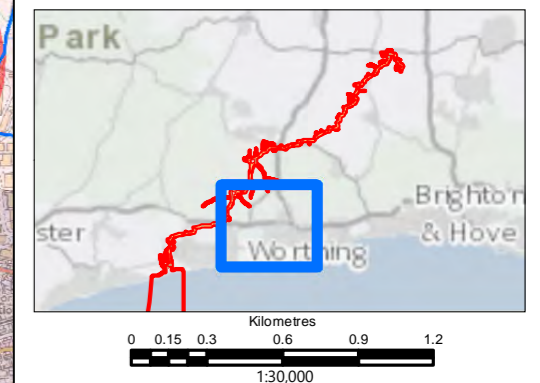
- ▲ Groundwater
- Private water supply buffer (50m)
- Private water supply buffer (250m)

**Source Protection Zones**

- Zone I - Inner Protection Zone
- Zone II - Outer Protection Zone
- Zone III - Total Catchment

**Bedrock Geology**

- Lambeth group
- Thames group
- White chalk subgroup
- Rivers
- Contours
- Catchments



**Key**

**Access from public highway**

- ◆ Construction
- ◇ Construction & operational
- ◆ Light construction
- ◇ Light construction & operational
- ◆ Operational

Rampion Extension Development

**Rampion 2 Offshore Wind Farm**

Figure 26.6d Water Resources including Licensed Abstractions, Source Protection Zones, Private Water Supplies and Consented Discharges.

**Environmental Statement**

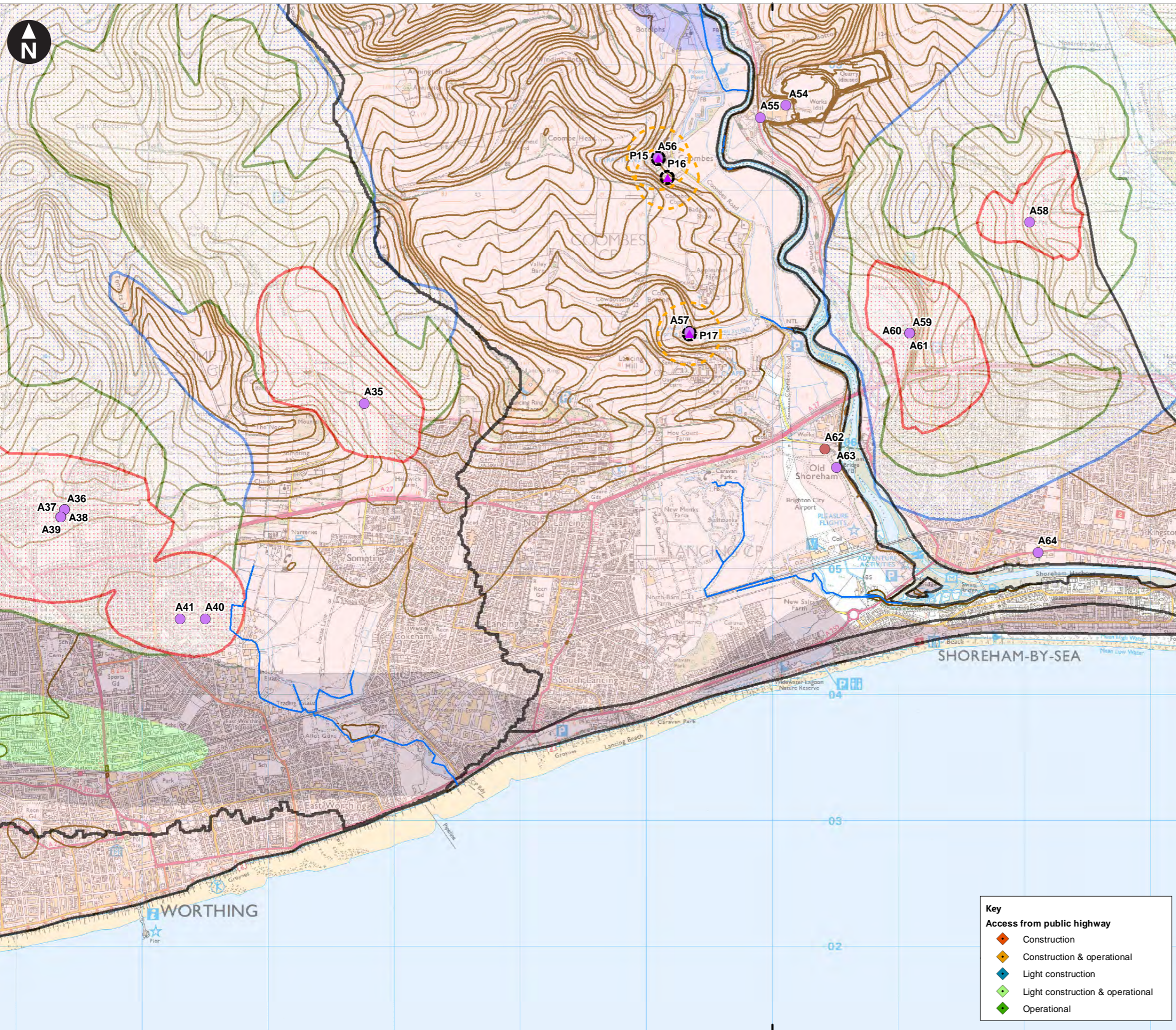
System Identifier: 42285-WSPE-ES-ON-FG-OY-7298		Version: 1.0
Company: WSP	Drawn By: SUTET	Chk/Prvrd: DOUGG
Drawn Date: 27/07/2023	Status: FINAL	



520000

Service Layer Credits: Contains OS data © Crown Copyright and database right 2020

© Crown copyright and database rights 2023 Ordnance Survey 0100031673



**Key**

**Licensed abstractions**

- Southern Region Groundwater
- Southern Region Surface Waters

**Private water supplies**

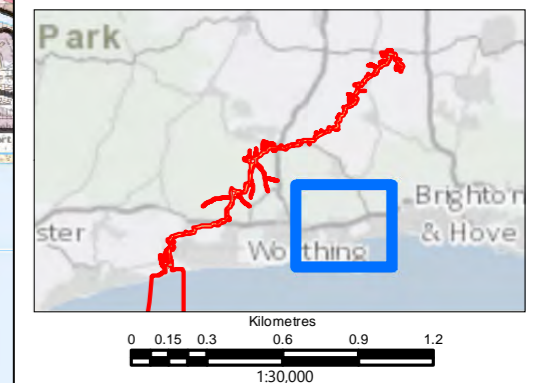
- Groundwater
- Private water supply buffer (50m)
- Private water supply buffer (250m)

**Source Protection Zones**

- Zone I - Inner Protection Zone
- Zone II - Outer Protection Zone
- Zone III - Total Catchment

**Bedrock Geology**

- Grey chalk subgroup
- Lambeth group
- Thames group
- White chalk subgroup
- Rivers
- Contours
- Catchments



**Key**

**Access from public highway**

- Construction
- Construction & operational
- Light construction
- Light construction & operational
- Operational

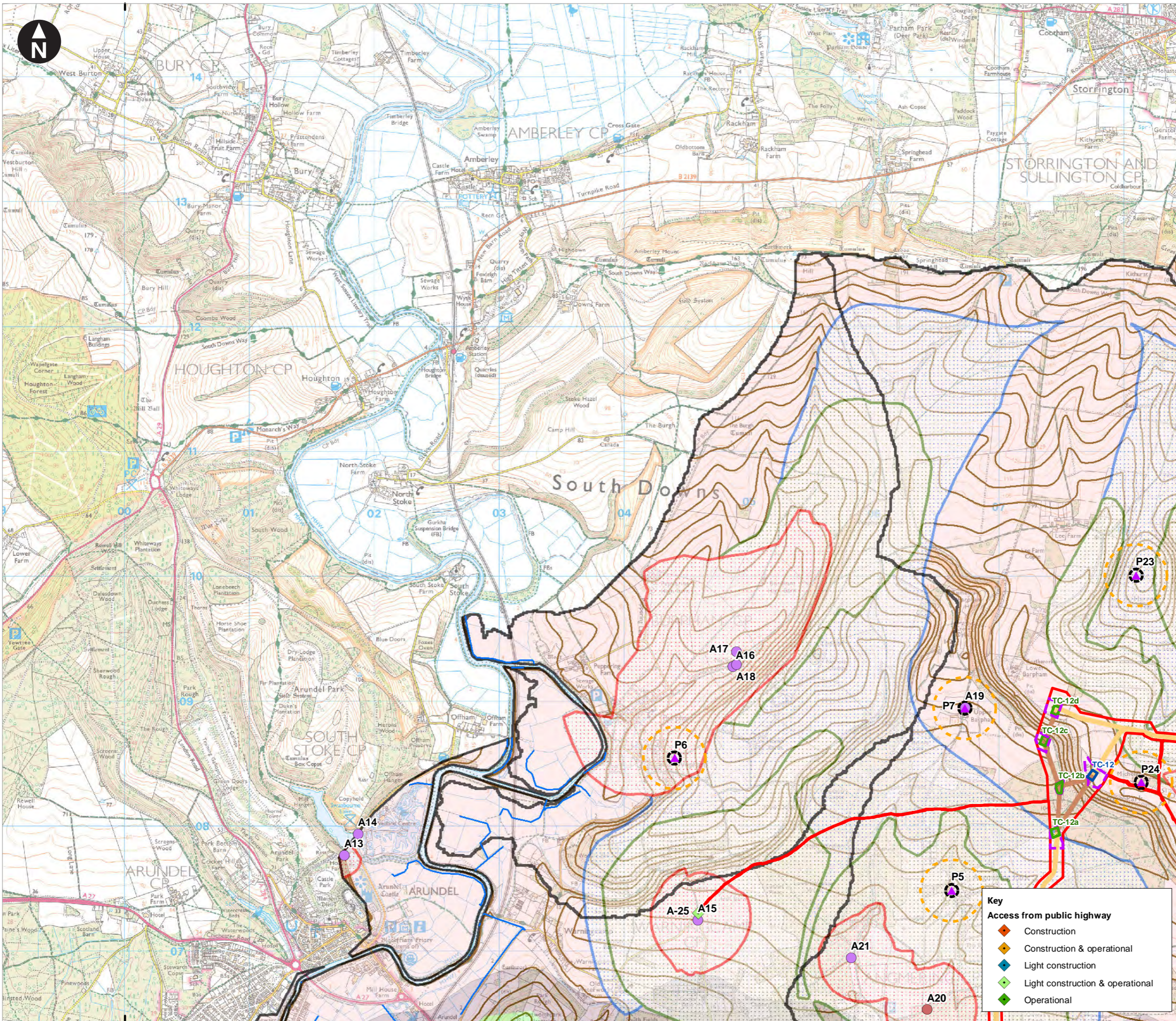
Rampion Extension Development

**Rampion 2 Offshore Wind Farm**

Figure 26.6e Water Resources including Licensed Abstractions, Source Protection Zones, Private Water Supplies and Consented Discharges.

Environmental Statement

System Identifier: 42285-WSPE-ES-ON-FG-OY-7298		Version: 1.0
Company: WSP	Drawn By: SUTET	Chk/Prvrd: DOUGG
Drawn Date: 27/07/2023	Status: FINAL	



**Key**

- Proposed DCO Order Limits
- Indicative trenchless section
- Indicative open cut section
- Trenchless Crossing (TC) compounds
- Trenchless Crossing (TC) compound alternatives
- Trenchless Crossing (TC) limits of deviation

**Licensed abstractions**

- Southern Region Groundwater
- Southern Region Surface Waters

**Private water supplies**

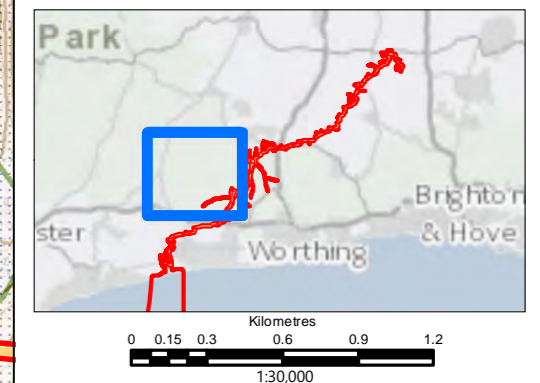
- Groundwater
- Private water supply buffer (50m)
- Private water supply buffer (250m)

**Source Protection Zones**

- Zone I - Inner Protection Zone
- Zone II - Outer Protection Zone
- Zone III - Total Catchment

**Bedrock Geology**

- Gault formation and Upper Greensand formation
- Lambeth group
- Thames group
- White chalk subgroup
- Rivers
- Contours
- Catchments



**Key**

**Access from public highway**

- Construction
- Construction & operational
- Light construction
- Light construction & operational
- Operational

Rampion Extension Development

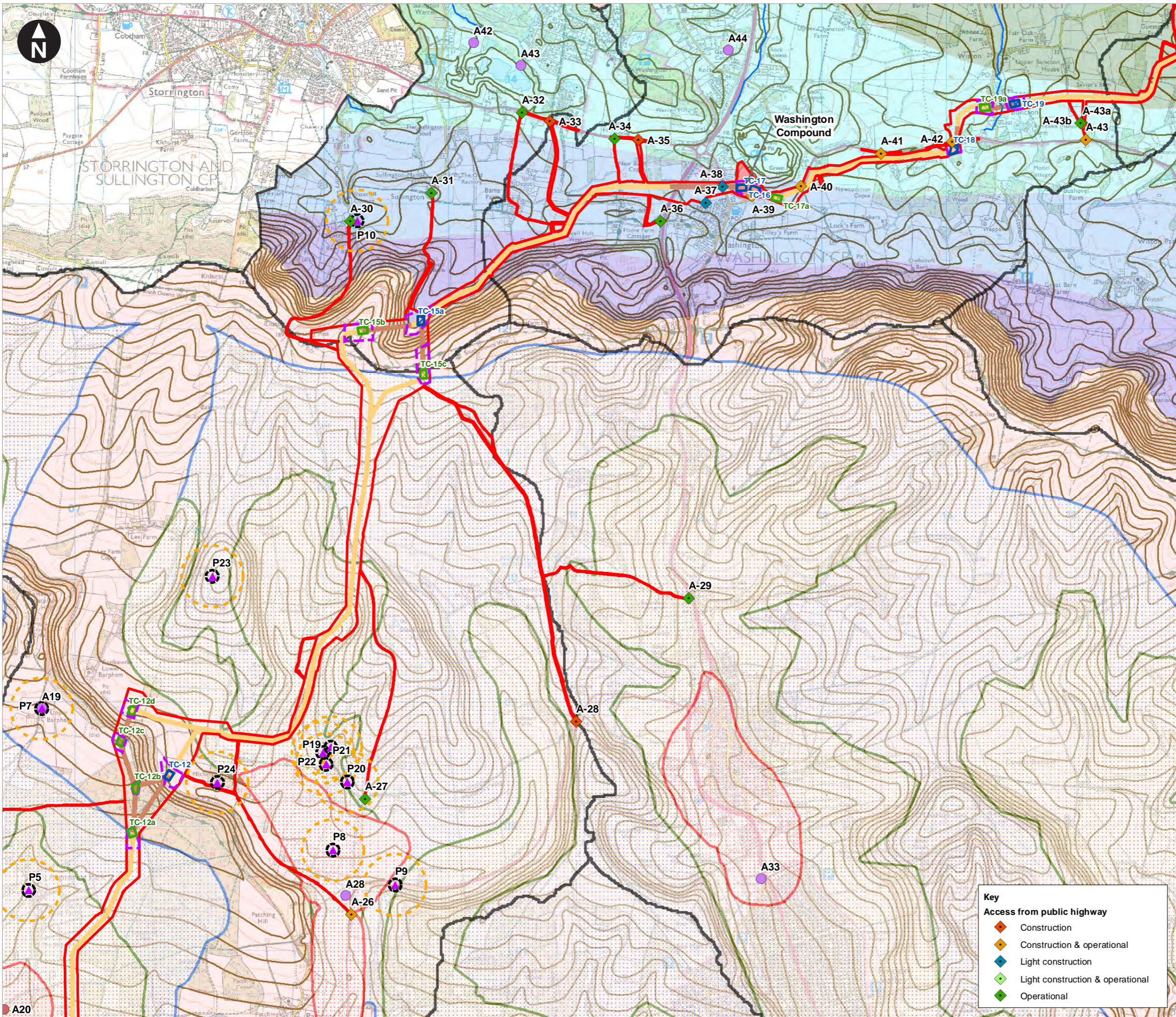
Rampion 2 Offshore Wind Farm

Figure 26.6f Water Resources including Licensed Abstractions, Source Protection Zones, Private Water Supplies and Consented Discharges.

Environmental Statement

System Identifier: 42285-WSP-ES-ON-FG-OY-7298      Version: 1.0

Company: WSP	Drawn By: SUTET	Chk/Prvrd: DOUGG	Drawn Date: 27/07/2023	Status: FINAL
--------------	-----------------	------------------	------------------------	---------------



Service Layer Credits: Contains OS data © Crown Copyright and database right 2020

© Crown copyright and database rights 2023 Ordnance Survey 0100031673

- Key**
- Proposed DCO Order Limits
  - Indicative trenchless section
  - Indicative open cut section
  - Temporary construction compound
  - Trenchless Crossing (TC) compounds
  - Trenchless Crossing (TC) compound alternatives
  - Trenchless Crossing (TC) limits of deviation
- Licensed abstractions**
- Southern Region Groundwater
  - Southern Region Surface Waters
- Private water supplies**
- ▲ Groundwater
  - Private water supply buffer (50m)
  - Private water supply buffer (250m)
- Source Protection Zones**
- Zone I - Inner Protection Zone
  - Zone II - Outer Protection Zone
  - Zone III - Total Catchment
- Bedrock Geology**
- Gault formation and Upper Greensand formation
  - Grey chalk subgroup
  - Lambeth group
  - Lower Greensand group
  - Wealden group
  - White chalk subgroup
  - Rivers
  - Contours
  - Catchments



Rampion Extension Development



**Rampion 2 Offshore Wind Farm**

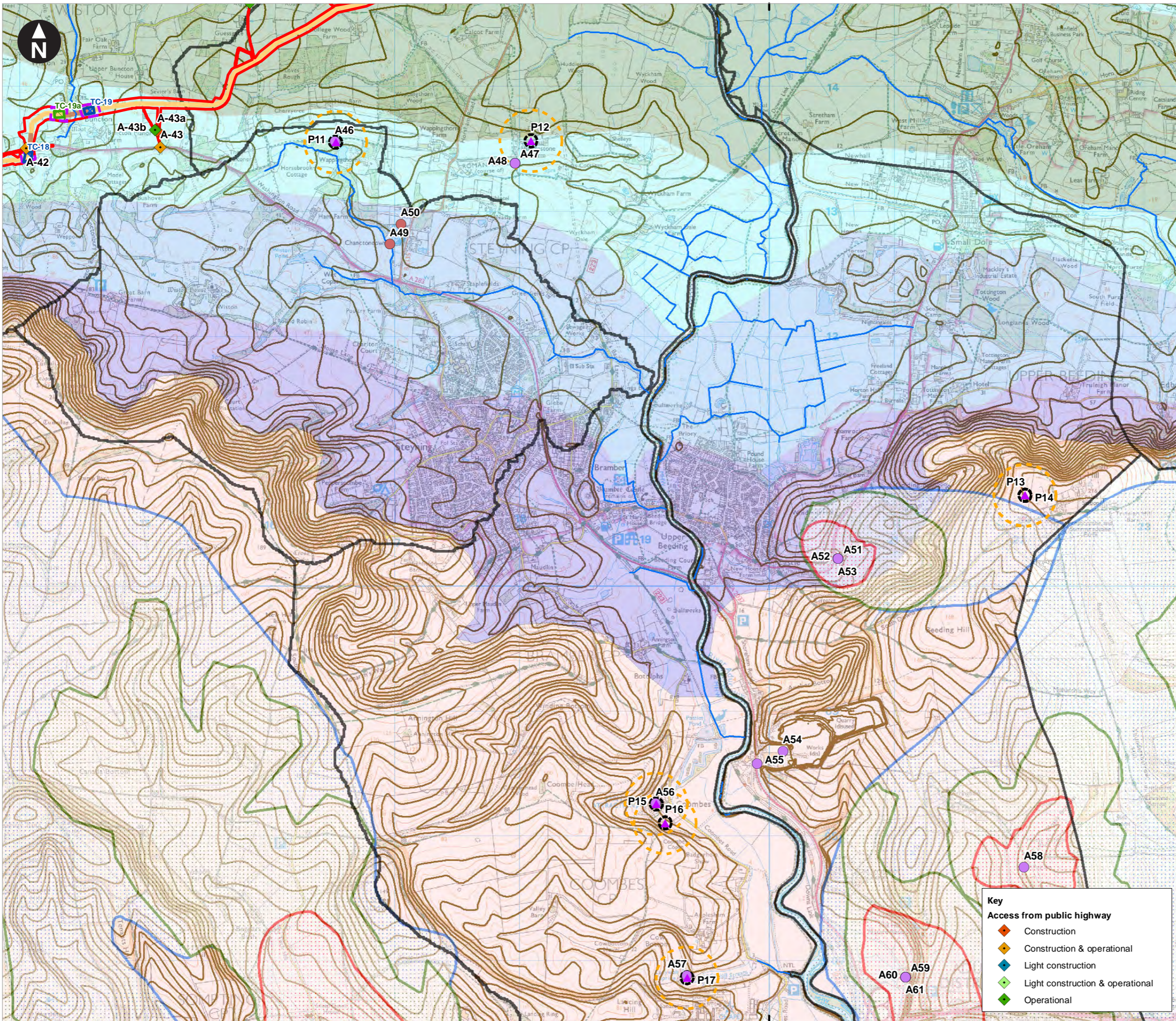
Figure 26.6g Water Resources including Licensed Abstractions, Source Protection Zones, Private Water Supplies and Consented Discharges.

**Environmental Statement**

System Identifier: 42285-WSPE-ES-ON-FG-OY-7298      Version: 1.0

Company: WSP	Drawn By: SUTET	Chk/Prvd: DOUGG	Drawn Date: 27/07/2023	Status: FINAL
--------------	-----------------	-----------------	------------------------	---------------

- Key**
- Access from public highway**
- ◆ Construction
  - ◆ Construction & operational
  - ◆ Light construction
  - ◆ Light construction & operational
  - ◆ Operational



**Key**

- Proposed DCO Order Limits
- Indicative trenchless section
- Indicative open cut section
- Trenchless Crossing (TC) compounds
- Trenchless Crossing (TC) compound alternatives
- Trenchless Crossing (TC) limits of deviation

**Licensed abstractions**

- Southern Region Groundwater
- Southern Region Surface Waters

**Private water supplies**

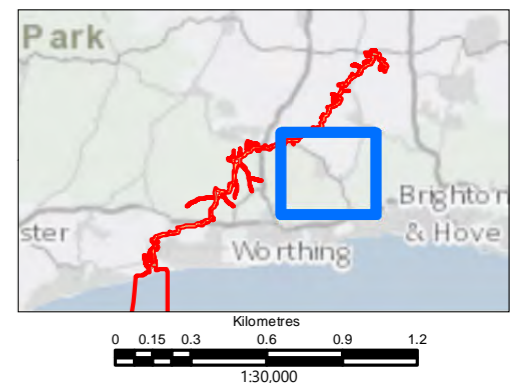
- ▲ Groundwater
- Private water supply buffer (50m)
- Private water supply buffer (250m)

**Source Protection Zones**

- Zone I - Inner Protection Zone
- Zone II - Outer Protection Zone
- Zone III - Total Catchment

**Bedrock Geology**

- Gault formation and Upper Greensand formation
- Grey chalk subgroup
- Lower Greensand group
- Wealden group
- White chalk subgroup
- Rivers
- Contours
- Catchments



**Key**

**Access from public highway**

- ◆ Construction
- ◆ Construction & operational
- ◆ Light construction
- ◆ Light construction & operational
- ◆ Operational

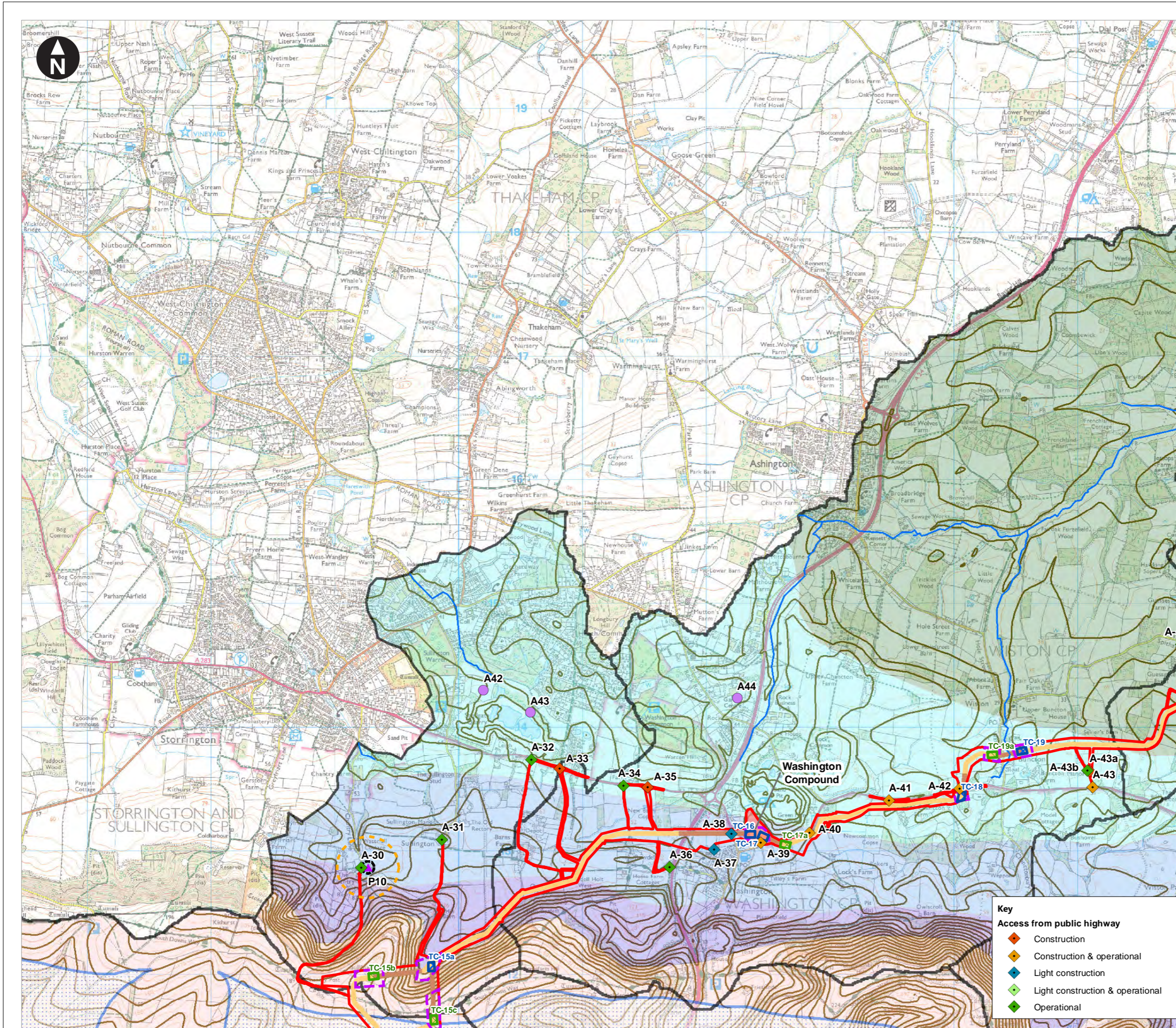
Rampion Extension Development

**Rampion 2 Offshore Wind Farm**

Figure 26.6h Water Resources including Licensed Abstractions, Source Protection Zones, Private Water Supplies and Consented Discharges.

Environmental Statement

System Identifier: 42285-WSP-ES-ON-FG-OY-7298		Version: 1.0
Company: WSP	Drawn By: SUTET	Chk/Prvrd: DOUGG
Drawn Date: 27/07/2023	Status: FINAL	



Service Layer Credits: Contains OS data © Crown Copyright and database right 2020

© Crown copyright and database rights 2023 Ordnance Survey 0100031673

**Key**

- Proposed DCO Order Limits
- Indicative trenchless section
- Indicative open cut section
- Temporary construction compound
- Trenchless Crossing (TC) compounds
- Trenchless Crossing (TC) compound alternatives
- Trenchless Crossing (TC) limits of deviation

**Licensed abstractions**

- Southern Region Groundwater

**Private water supplies**

- Groundwater
- Private water supply buffer (50m)
- Private water supply buffer (250m)

**Source Protection Zones**

- Zone III - Total Catchment

**Bedrock Geology**

- Gault formation and Upper Greensand formation
- Grey chalk subgroup
- Lower Greensand group
- Wealden group
- White chalk subgroup
- Rivers
- Contours
- Catchments

**Key**

**Access from public highway**

- Construction
- Construction & operational
- Light construction
- Light construction & operational
- Operational

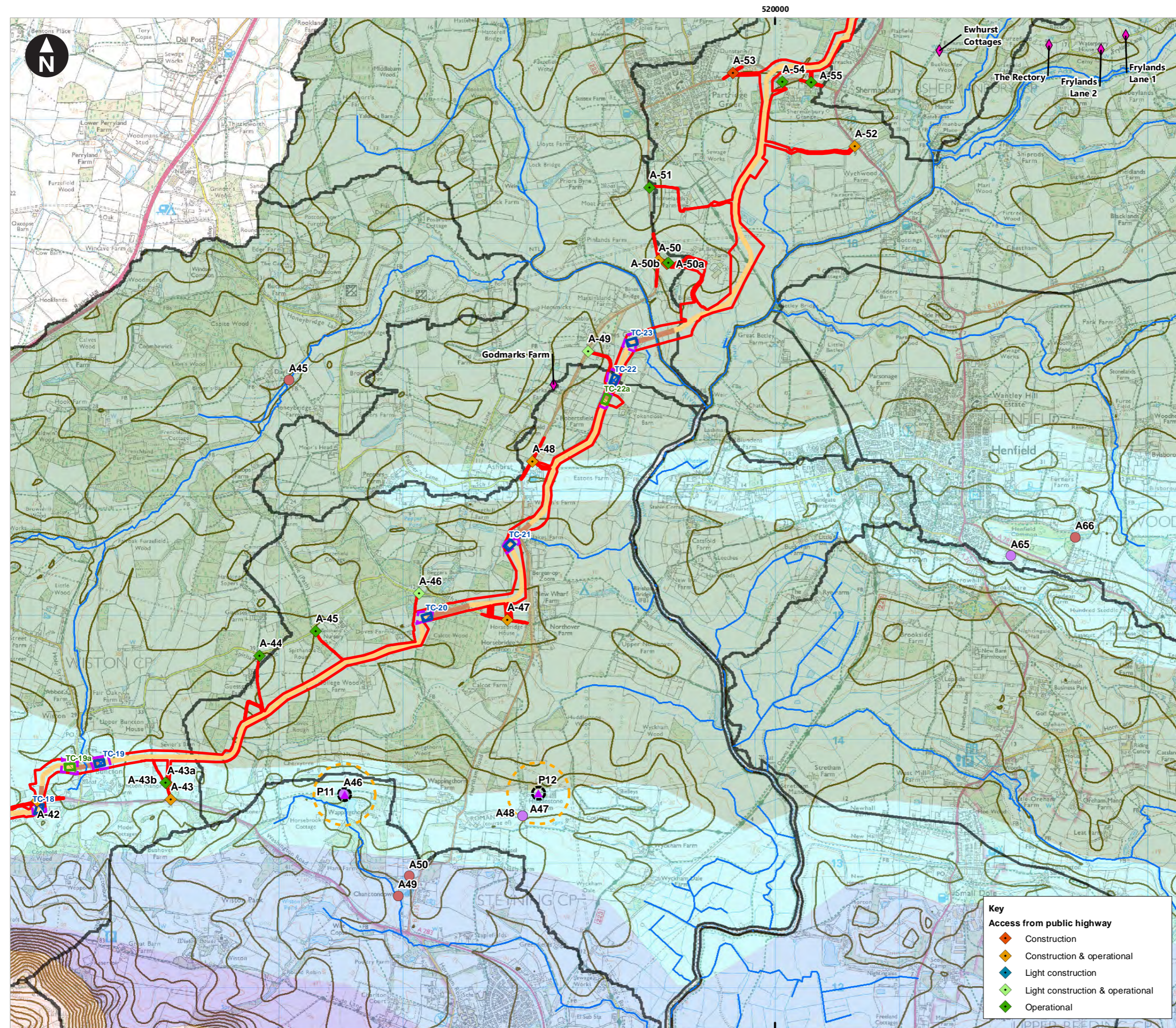
**Rampion Extension Development**

**Rampion 2 Offshore Wind Farm**

Figure 26.6i Water Resources including Licensed Abstractions, Source Protection Zones, Private Water Supplies and Consented Discharges.

**Environmental Statement**

System Identifier:		Version:
42285-WSP-ES-ON-FG-OY-7298		1.0
Company:	Drawn By:	Chk/Prvd:
WSP	SUTET	DOUGG
Drawn Date:	Status:	
27/07/2023	FINAL	



Service Layer Credits: Contains OS data © Crown Copyright and database right 2020  
 © Crown copyright and database rights 2023 Ordnance Survey 0100031673

**Key**

- Proposed DCO Order Limits
- Indicative trenchless section
- Indicative open cut section
- Trenchless Crossing (TC) compounds
- Trenchless Crossing (TC) compound alternatives
- Trenchless Crossing (TC) limits of deviation

**Licensed abstractions**

- Southern Region Groundwater
- Southern Region Surface Waters

**Private water supplies**

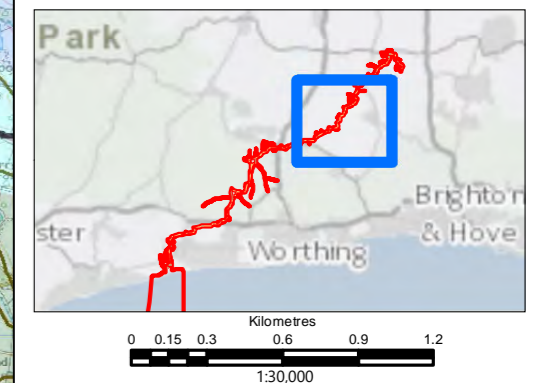
- ▲ Groundwater
- Private water supply buffer (50m)
- Private water supply buffer (250m)

**Unregistered mapped wells**

- ◆ Unregistered mapped wells

**Bedrock Geology**

- Gault formation and Upper Greensand formation
- Grey chalk subgroup
- Lower Greensand group
- Wealden group
- White chalk subgroup
- Rivers
- Contours
- Catchments



**Key**

**Access from public highway**

- ◆ Construction
- ◇ Construction & operational
- ◆ Light construction
- ◆ Light construction & operational
- ◇ Operational

Rampion Extension Development

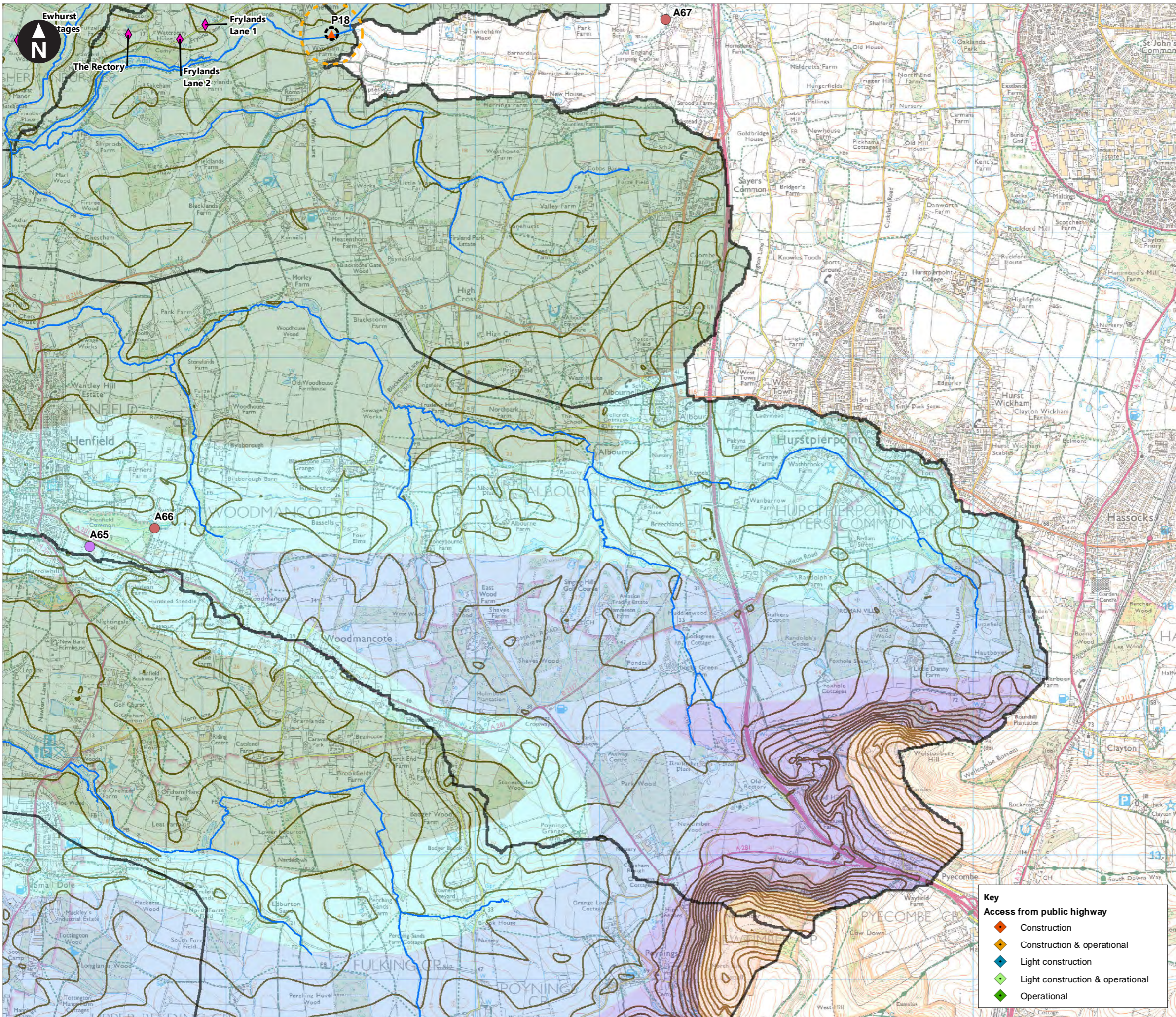
**Rampion 2 Offshore Wind Farm**

Figure 26.6j Water Resources including Licensed Abstractions, Source Protection Zones, Private Water Supplies and Consented Discharges.

Environmental Statement

System Identifier: 42285-WSP-ES-ON-FG-OY-7298      Version: 1.0

Company: WSP	Drawn By: SUTET	Chk/Prvrd: DOUGG	Drawn Date: 27/07/2023	Status: FINAL
--------------	-----------------	------------------	------------------------	---------------



Service Layer Credits: Contains OS data © Crown Copyright and database right 2020

© Crown copyright and database rights 2023 Ordnance Survey 0100031673

**Key**

**Licensed abstractions**

- Southern Region Groundwater
- Southern Region Surface Waters

**Private water supplies**

- ▲ Surface water
- ▬ Private water supply buffer (50m)
- ▬ Private water supply buffer (250m)

**Unregistered mapped wells**

- ◆ Unregistered mapped wells

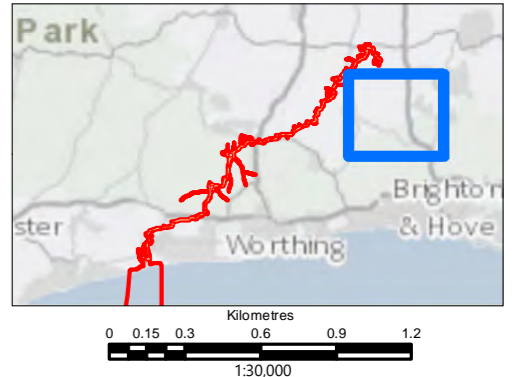
**Bedrock Geology**

- Gault formation and Upper Greensand formation
- Grey chalk subgroup
- Lower Greensand group
- Wealden group
- White chalk subgroup
- Rivers
- Contours
- Catchments

**Key**

**Access from public highway**

- ◆ Construction
- ◆ Construction & operational
- ◆ Light construction
- ◆ Light construction & operational
- ◆ Operational



Rampion Extension Development

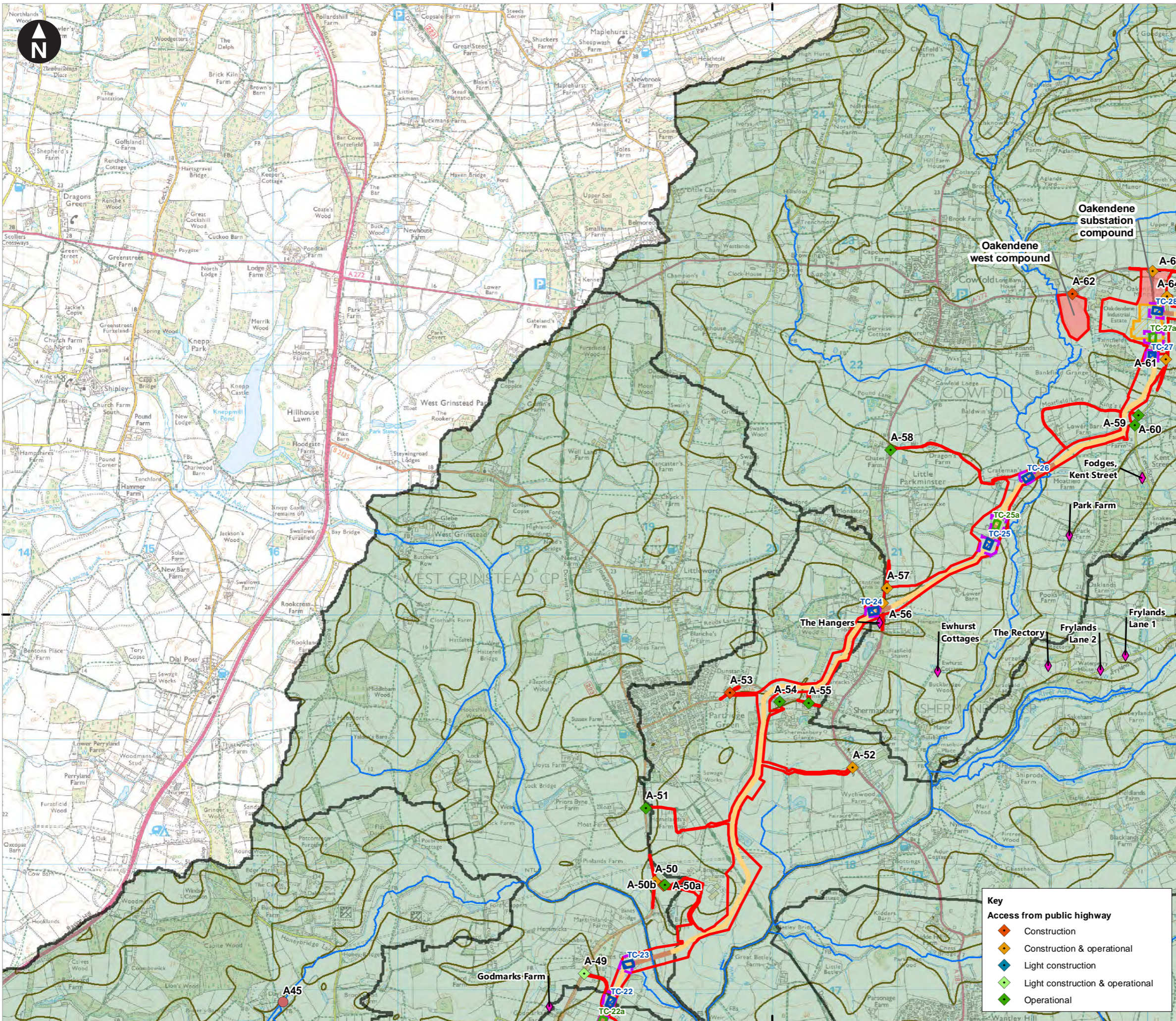
**Rampion 2 Offshore Wind Farm**

Figure 26.6k Water Resources including Licensed Abstractions, Source Protection Zones, Private Water Supplies and Consented Discharges.

Environmental Statement

System Identifier: 42285-WSP-ES-ON-FG-OY-7298 Version: 1.0

Company: WSP	Drawn By: SUTET	Chk/Prvrd: DOUGG	Drawn Date: 27/07/2023	Status: FINAL
--------------	-----------------	------------------	------------------------	---------------



**Key**

- Proposed DCO Order Limits
- Indicative trenchless section
- Indicative open cut section
- Temporary construction compound
- Trenchless Crossing (TC) compounds
- Trenchless Crossing (TC) compound alternatives
- Trenchless Crossing (TC) limits of deviation
- Oakendene substation and permanent access

**Licensed abstractions**

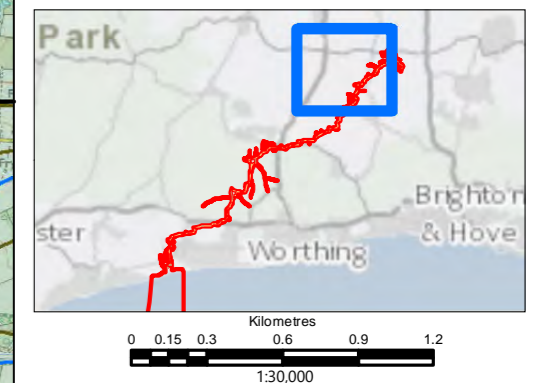
- Southern Region Surface Waters

**Unregistered mapped wells**

- ◆ Unregistered mapped wells

**Bedrock Geology**

- Wealden group
- Rivers
- Contours
- Catchments



**Key**

**Access from public highway**

- ◆ Construction
- ◆ Construction & operational
- ◆ Light construction
- ◆ Light construction & operational
- ◆ Operational

Rampion Extension Development

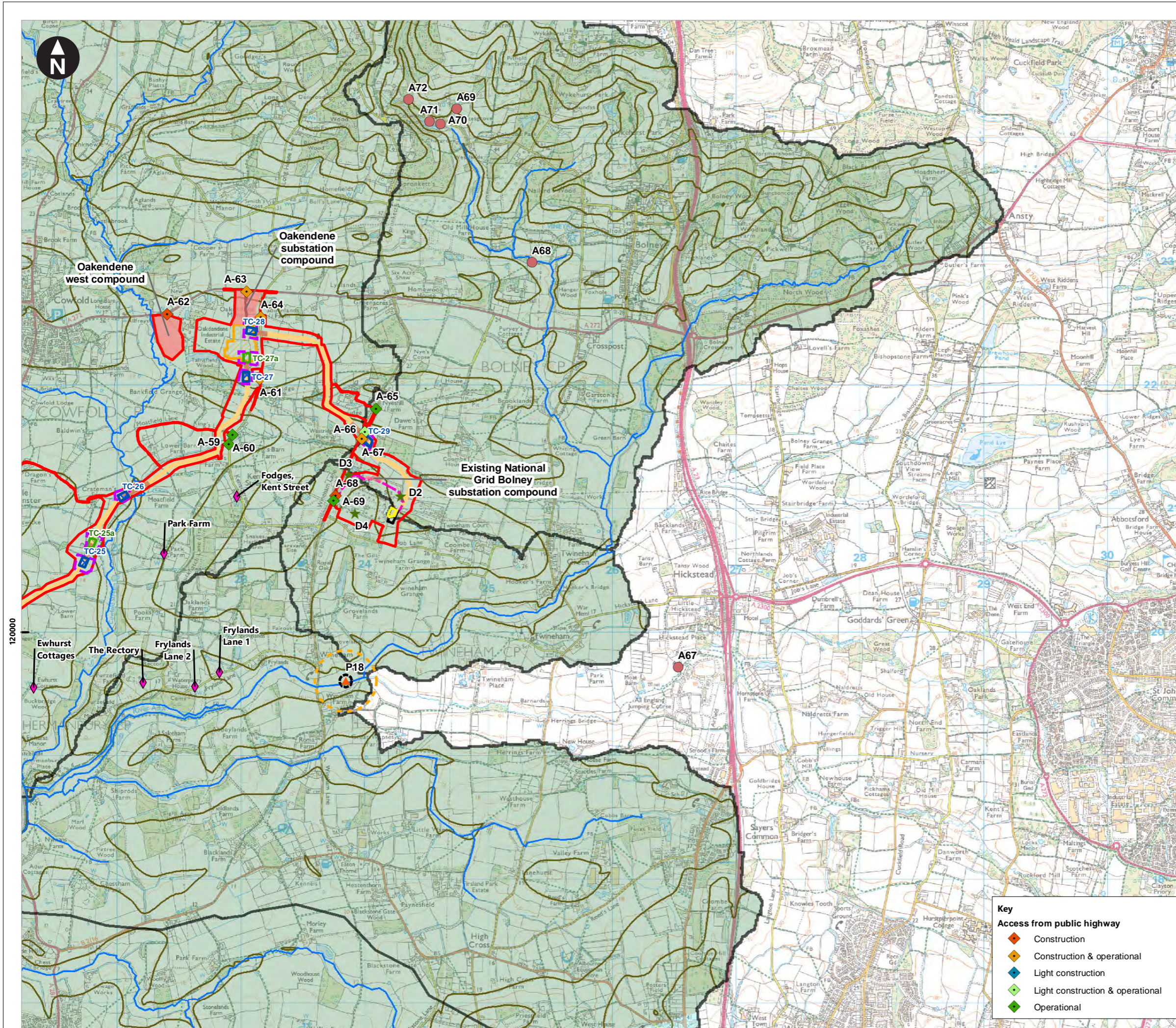
Rampion 2 Offshore Wind Farm

Figure 26.61 Water Resources including Licensed Abstractions, Source Protection Zones, Private Water Supplies and Consented Discharges.

Environmental Statement

System Identifier: 42285-WSP-ES-ON-FG-OY-7298		Version: 1.0
Company: WSP	Drawn By: SUTET	Chk/Prvrd: DOUGG
Drawn Date: 27/07/2023	Status: FINAL	





Service Layer Credits: Contains OS data © Crown Copyright and database right 2020

© Crown copyright and database rights 2023 Ordnance Survey 0100031673

**Key**

- Proposed DCO Order Limits
- Indicative trenchless section
- Indicative open cut section
- Temporary construction compound
- Trenchless Crossing (TC) compounds
- Trenchless Crossing (TC) compound alternatives
- Trenchless Crossing (TC) limits of deviation
- Oakendene substation and permanent access
- Bolney Substation extension (GIS)
- Bolney Substation extension (AIS)
- Construction access

**Licensed abstractions**

- Southern Region Surface Waters

**Private water supplies**

- Surface water
- Private water supply buffer (50m)
- Private water supply buffer (250m)

**Consented discharges**

- Consented discharges

**Unregistered mapped wells**

- Unregistered mapped wells

**Bedrock Geology**

- Lower Greensand group
- Wealden group
- Rivers
- Contours
- Catchments

**Key**

**Access from public highway**

- Construction
- Construction & operational
- Light construction
- Light construction & operational
- Operational

**Rampion Extension Development**

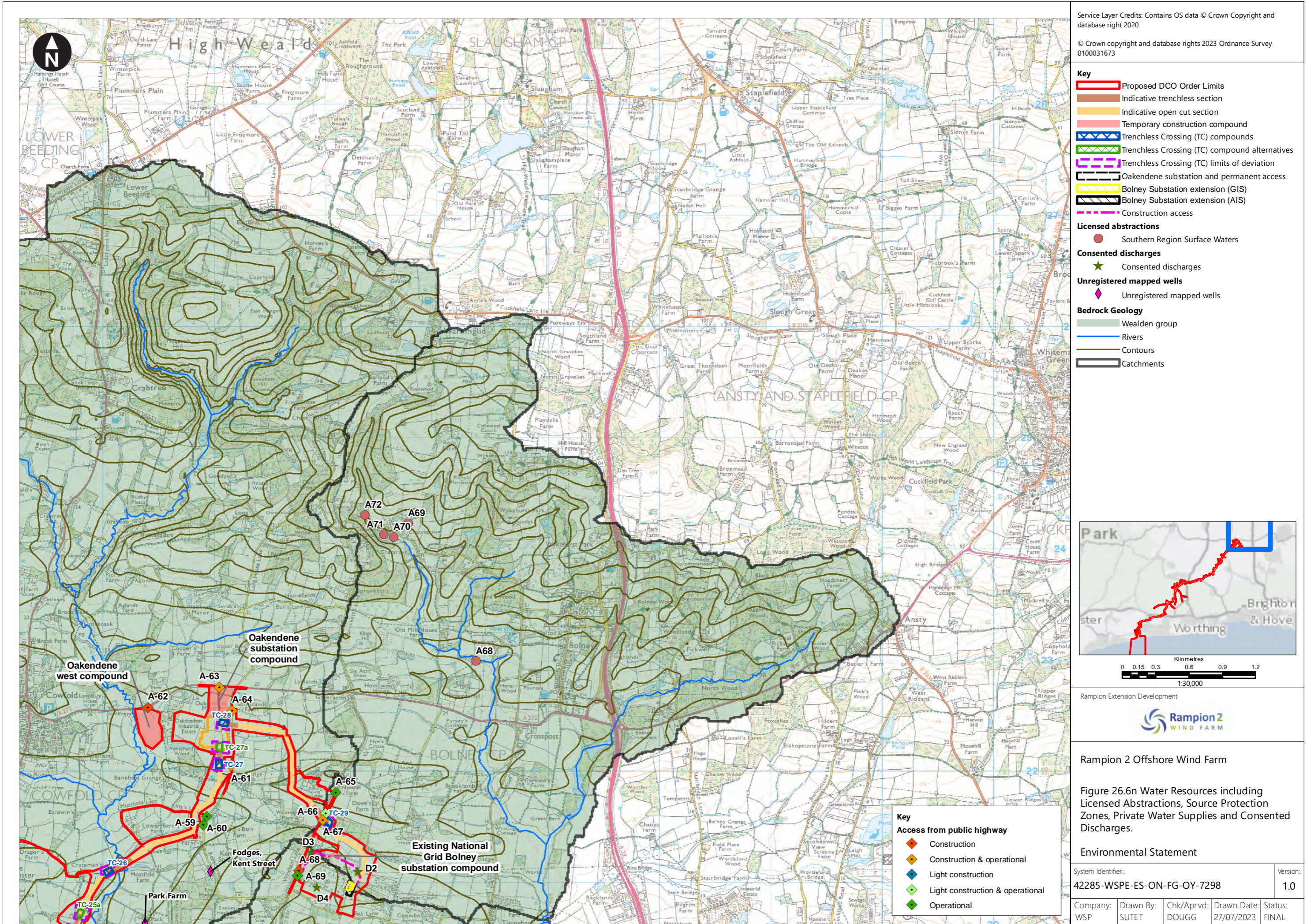
**Rampion 2 Offshore Wind Farm**

Figure 26.6m Water Resources including Licensed Abstractions, Source Protection Zones, Private Water Supplies and Consented Discharges.

**Environmental Statement**

System Identifier: 42285-WSP-ES-ON-FG-OY-7298      Version: 1.0

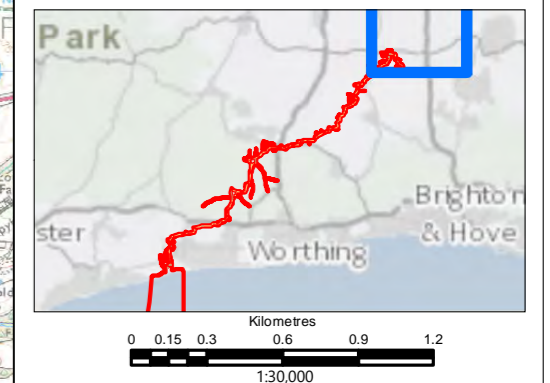
Company: WSP	Drawn By: SUTET	Chk/Prvrd: DOUGG	Drawn Date: 27/07/2023	Status: FINAL
--------------	-----------------	------------------	------------------------	---------------



Service Layer Credits: Contains OS data © Crown Copyright and database right 2020

© Crown copyright and database rights 2023 Ordnance Survey 0100031673

- Key**
- Proposed DCO Order Limits
  - Indicative trenchless section
  - Indicative open cut section
  - Temporary construction compound
  - Trenchless Crossing (TC) compounds
  - Trenchless Crossing (TC) compound alternatives
  - Trenchless Crossing (TC) limits of deviation
  - Oakendene substation and permanent access
  - Bolney Substation extension (GIS)
  - Bolney Substation extension (AIS)
  - Construction access
- Licensed abstractions**
- Southern Region Surface Waters
- Consented discharges**
- ★ Consented discharges
- Unregistered mapped wells**
- ◆ Unregistered mapped wells
- Bedrock Geology**
- Wealden group
  - Rivers
  - Contours
  - Catchments



Rampion Extension Development

Rampion 2 Offshore Wind Farm

Figure 26.6n Water Resources including Licensed Abstractions, Source Protection Zones, Private Water Supplies and Consented Discharges.

Environmental Statement

System Identifier: 42285-WSP-ES-ON-FG-OY-7298

Version: 1.0

Company: WSP	Drawn By: SUTET	Chk/Prvrd: DOUGG	Drawn Date: 27/07/2023	Status: FINAL
--------------	-----------------	------------------	------------------------	---------------

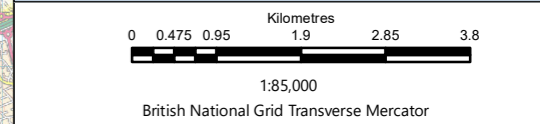
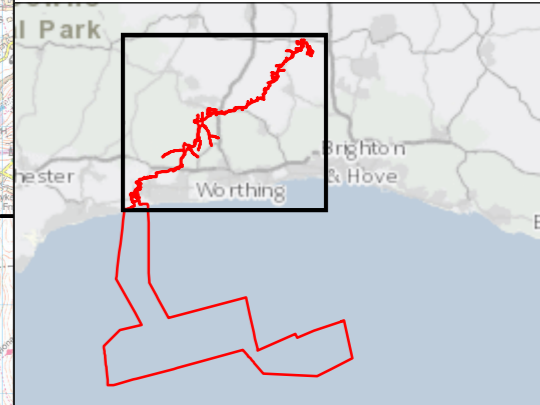
- Key**
- Access from public highway**
- ◆ Construction
  - ◇ Construction & operational
  - ◆ Light construction
  - ◆ Light construction & operational
  - ◇ Operational



Service Layer Credits: Contains OS data © Crown Copyright and database right 2020  
 © Crown copyright and database rights [2022] Ordnance Survey 0100031673

- Key**
- Proposed DCO Order limits
  - Bolney Substation extension (GIS)
  - Bolney Substation extension (AIS)
  - Oakendene substation site
  - Spatial flood defences
  - Flood Storage Areas
  - Main Rivers
  - Areas benefiting from flood defences
  - Flood Zone 3
  - Flood Zone 2
  - Flood Zone 1

\*Note there are no 'areas benefitting from flood defences' in the study area.



Rampion Extension Development



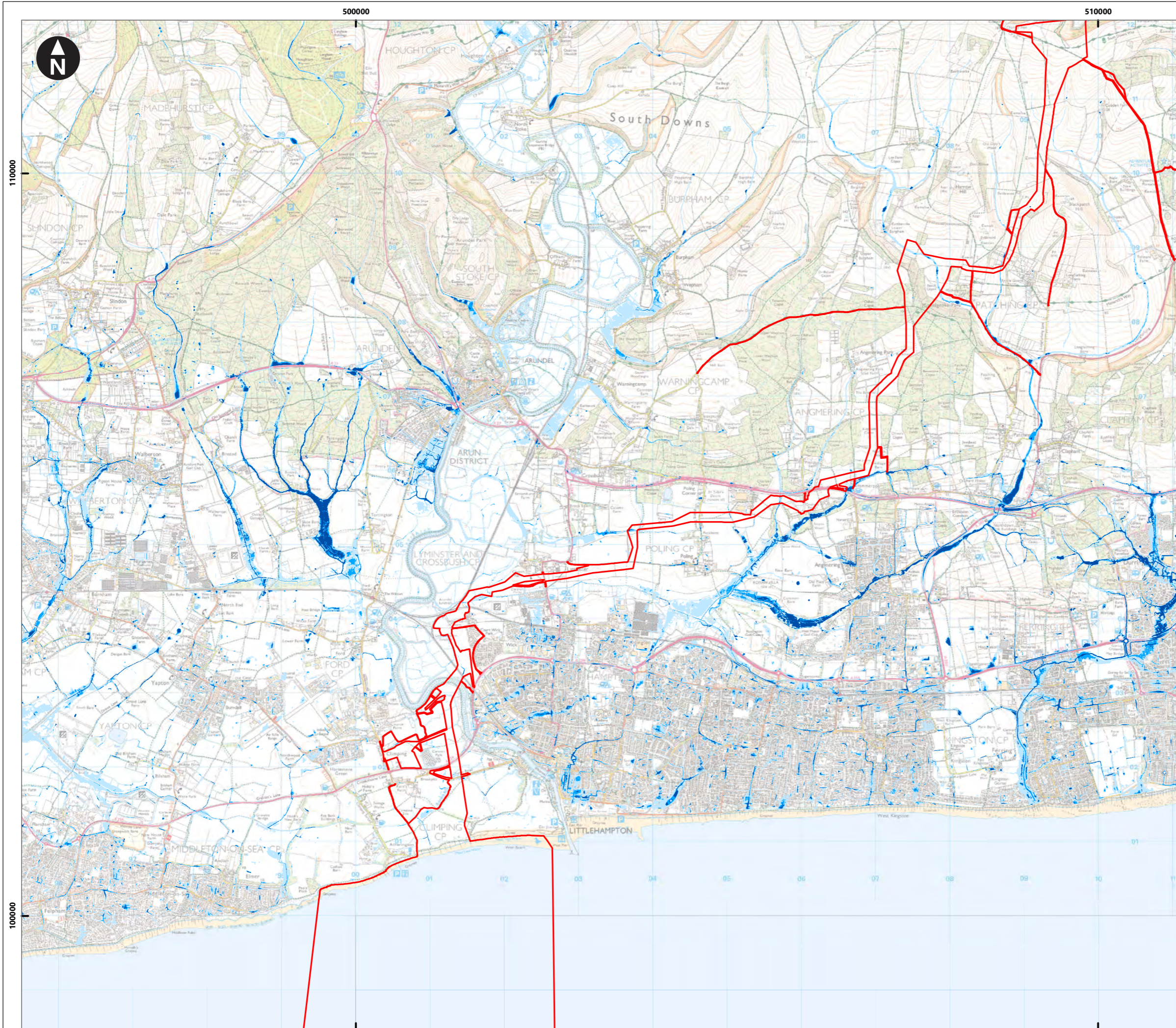
Rampion 2 Offshore Wind Farm

Figure 26.7 Environment Agency Flood Map for Planning overview

Environmental Statement

System Identifier:	Version:
42285-WSP-ES-ON-FG-OY-2748	1.0

Company:	Drawn By:	Chk/Prvd:	Drawn Date:	Status:
WSP	SUTET	DOUGG	11/07/2023	FINAL



Service Layer Credits: Contains OS data © Crown Copyright and database right 2020  
© Crown copyright and database rights [2022] Ordnance Survey 0100031673

**Key**

- Proposed DCO Order limits
- Bolney Substation extension (GIS)
- Bolney Substation extension (AIS)
- Oakdene substation site

**Risk of flooding from surface water flood extent**

- > 3.33% Annual Exceedance Probability - High risk of surface water flooding
- 1% - 3.33% Annual Exceedance Probability - Medium risk of surface water flooding
- 0.1 - 1% Annual Exceedance Probability - Low risk of surface water flooding

0 0.275 0.55 1.1 1.65 2.2  
Kilometres  
1:50,000  
British National Grid Transverse Mercator

Rampion Extension Development

Rampion 2 Offshore Wind Farm

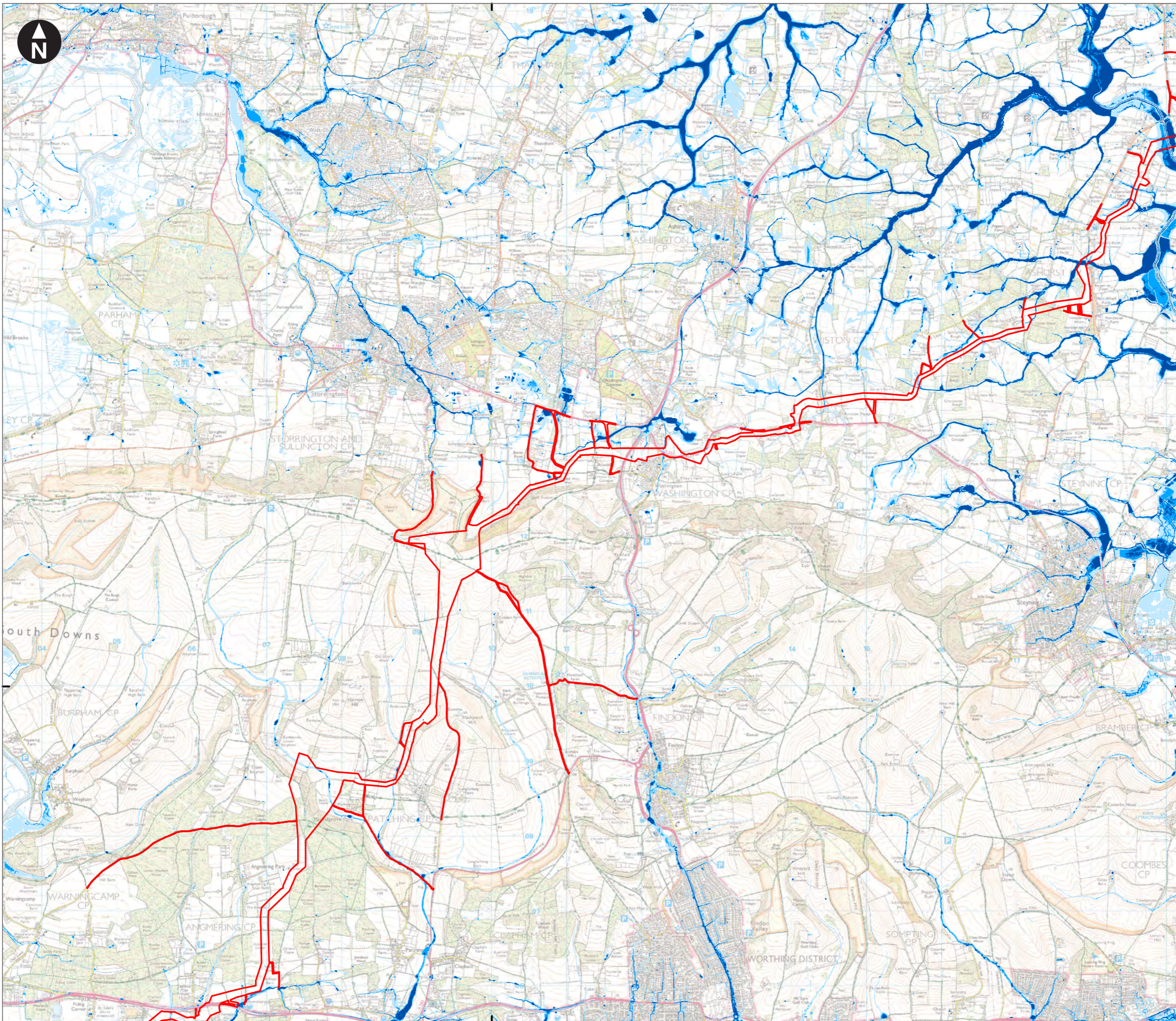
Figure 26.8a Environment Agency Risk of Flooding from Surface Water Flood Extent: Littlehampton

Environmental Statement

System Identifier: 42285-WSP-ES-ON-FG-OY-4186		Version: 1.0
Company: WSP	Drawn By: SUTET	Chk/Aprvd: DOUGG
Drawn Date: 05/07/2023	Status: FINAL	

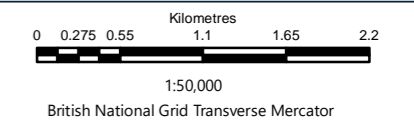
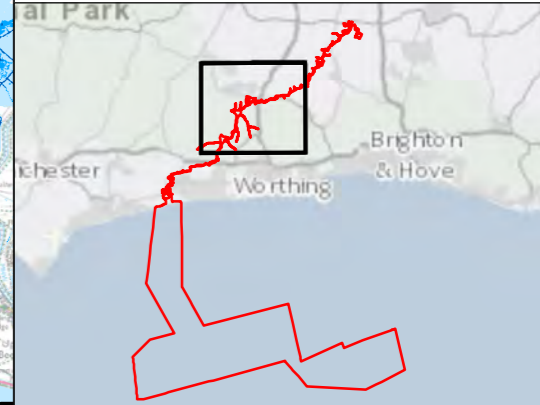
510000

Service Layer Credits: Contains OS data © Crown Copyright and database right 2020  
© Crown copyright and database rights [2022] Ordnance Survey 0100031673



- Key**
- Proposed DCO Order limits
  - Bolney Substation extension (GIS)
  - Bolney Substation extension (AIS)
  - Oakendene substation site

- Risk of flooding from surface water flood extent**
- > 3.33% Annual Exceedance Probability - High risk of surface water flooding
  - 1%- 3.33% Annual Exceedance Probability - Medium risk of surface water flooding
  - 0.1 - 1% Annual Exceedance Probability - Low risk of surface water flooding



Rampion Extension Development

Rampion 2 Offshore Wind Farm  
Figure 26.8b Environment Agency Risk of Flooding from Surface Water Flood Extent: Washington

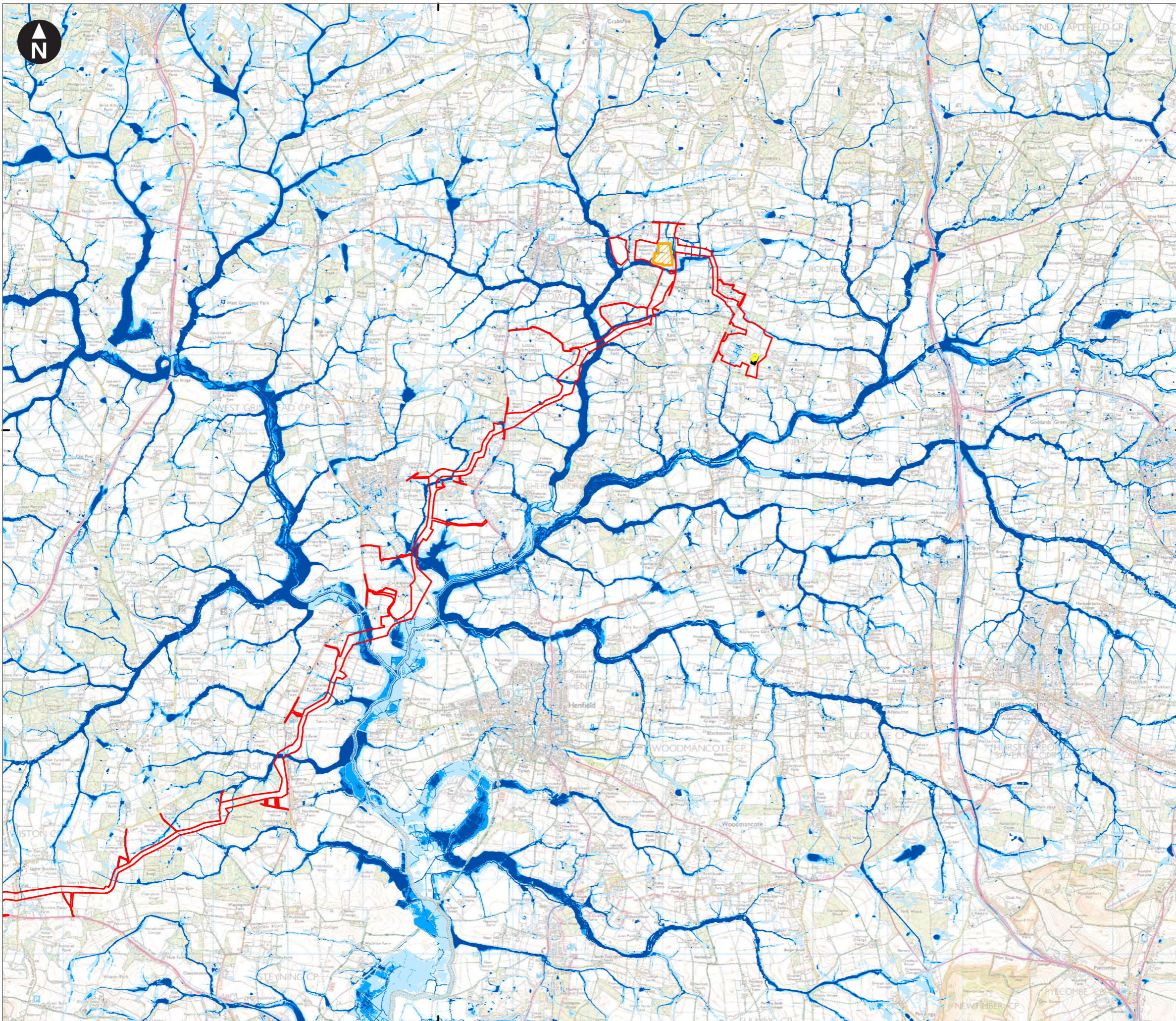
Environmental Statement

System Identifier: 42285-WSPE-ES-ON-FG-OY-4186  
Version: 1.0

Company: WSP  
Drawn By: SUTET  
Chk/Prvd: DOUGG  
Drawn Date: 05/07/2023  
Status: FINAL

110000

520000

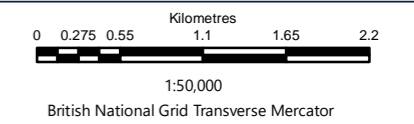
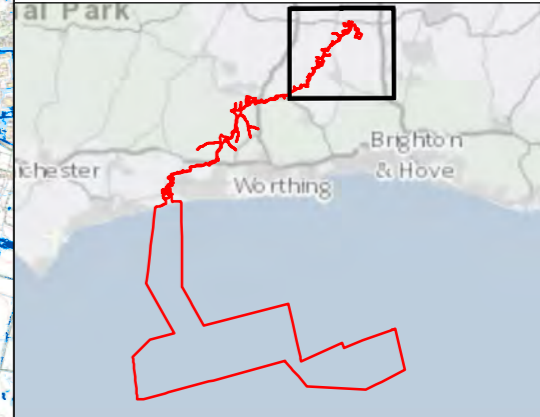


120000

Service Layer Credits: Contains OS data © Crown Copyright and database right 2020  
© Crown copyright and database rights [2022] Ordnance Survey 0100031673

- Key**
- Proposed DCO Order limits
  - Bolney Substation extension (GIS)
  - Bolney Substation extension (AIS)
  - Oakendene substation site

- Risk of flooding from surface water flood extent**
- > 3.33% Annual Exceedance Probability - High risk of surface water flooding
  - 1%- 3.3% Annual Exceedance Probability - Medium risk of surface water flooding
  - 0.1 - 1% Annual Exceedance Probability - Low risk of surface water flooding



Rampion Extension Development

Rampion 2 Offshore Wind Farm

Figure 26.8c Environment Agency Risk of Flooding from Surface Water Flood Extent: Bolney

Environmental Statement

System Identifier: 42285-WSP-ES-ON-FG-OY-4186      Version: 1.0

Company: WSP	Drawn By: SUTET	Chk/Prvd: DOUGG	Drawn Date: 05/07/2023	Status: FINAL
--------------	-----------------	-----------------	------------------------	---------------

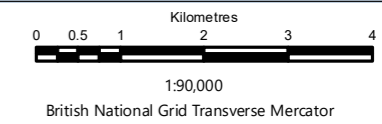


Service Layer Credits: Contains OS data © Crown Copyright and database right 2020  
 © Crown copyright and database rights [2022] Ordnance Survey 0100031673

**Key**

- Proposed DCO Order Limits
- Water Environment Cumulative Effects Assessment (CEA) Zone of Influence

The Zone of Influence is based on a combination of surface water catchments, source protection zones and local planning applications which may be hydrologically linked.



Rampion Extension Development



**Rampion 2 Offshore Wind Farm**

Figure 26.9 Water Environment Cumulative Effects Assessment (CEA) Zone of Influence

Environmental Statement

System Identifier:	Version:
42285-WSPE-ES-ON-FG-OY-1293	1.0

Company:	Drawn By:	Chk/Prvrd:	Drawn Date:	Status:
WSP	COLLJ	DOUGG	14/07/2023	FINAL